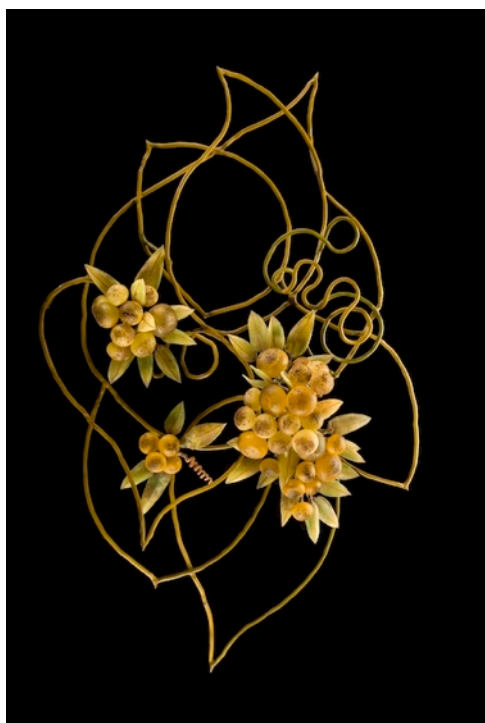


Opening Reception **1 July** | Exhibition through **28 August**

MICAËLA GALLERY presents COLD+HOT 2010, an annual showcase of the work of selected national and international glass sculptors in a single exhibition. Featured artists are Peter Bremers, Kathleen Elliot, Michael Janis, Michelle Knox, Weston Lambert, Carol Lawton, Silvia Levenson, JP Long, Susan Longini, Thomas Scoon, Carmen Spera, and Kristiina Uslar, who collectively demonstrate the expansive versatility of glass as a sculpture medium in terms of material, color, and form, alongside the video work of Tim Tate and photography of Mark Leibowitz.

The exhibition title, COLD+HOT 2010, derives from the distinct processes used by glass artists for millennia - sculpting its form, or cold-working it while cold (actually, at room temperature), very hard and brittle; and working hot glass, shaping it while molten, using blowing and/or kiln forming techniques at temperatures ranging from 1700 to over 3000 degrees.



Kathleen Elliot, a multi-awarded artist (Juror's Award, Bay Area Glass Institute 2009), works with botanical sculpture - natural and imaginary - and earned recognition for her work on a national level throughout the U.S.

Elliot spent the past several years perfecting the techniques necessary to execute the incredibly realistic botanical studies for which she is known. The scale of her leaves, fruit, flowers, and seed pods - slightly larger than life-sized - accentuates their incredible, realistic beauty and magnifies the sensuous textures of their surfaces.

Elliot intends her work to return the viewer to a place of wonder and appreciation, where we can find a center in the face of our 21st century culture. Inspired by the patterns of veins in leaves, the golden color of her children's sleepy faces when they awake in the morning, the blackness of crows, the rich smell of the forest floor and changing colors of autumn leaves, seed pods and acorns, she works to remind herself of the simple, and rich, things in life.

IMAGE: Kathleen Elliot. Homage to Castaneda, 2007. Flame-worked and sandblasted glass, painted steel. 40 x 25 x 7 in.

You are cordially invited to join us for a welcoming reception for the artists on Thursday, 1 July 2010, from 5 to 7.30 pm.

For inquiries or a preview of these works, please contact [info@micaela.com](mailto:info@micaela.com).

A print exhibition catalog, PDF exhibition catalog, photographs and high resolution images are available upon request. To order print exhibition catalog, please contact the gallery at [info@micaela.com](mailto:info@micaela.com)

All images are courtesy of the artists and Micaëla Gallery, protected by all copyright/trademark laws everywhere. ©1997-2010 micaëla and micaëla gallery, its name, logo and all website content are copyright/trademarks of micaëla gallery llc.

**About Us:** Micaëla Gallery is located at 49 Geary Street, No. 234, San Francisco, CA. Gallery hours are Tuesday through Saturday, 11am to 6pm, and by appointment. The closest BART|MUNI stop is at Montgomery Station. Public parking is available at the Sutter/Stockton Garage and the Union Square Garage.