

July 1 to August 28 San Francisco micaela.com

**COLD+HOT** 2010

Glass Sculpture

Micaëla Gallery  
Group Exhibition Opening Reception  
video  
Sculpture Photography  
micaëla gallery

**Glass Sculpture**

Opening Reception **1 July** | Exhibition through **28 August**

MICAËLA GALLERY presents COLD+HOT 2010, an annual showcase of the work of selected national and international glass sculptors in a single exhibition. Featured artists are Peter Bremers, Kathleen Elliot, Michael Janis, Michelle Knox, Weston Lambert, Carol Lawton, Silvia Levenson, JP Long, Susan Longini, Thomas Scoon, Carmen Spera, and Kristiina Uslar, who collectively demonstrate the expansive versatility of glass as a sculpture medium in terms of material, color, and form, alongside the video work of Tim Tate and photography of Mark Leibowitz.

The exhibition title, "COLD+HOT 2010," derives from the distinct processes used by glass artists for millennia - sculpting its form, or cold-working it while cold (actually, at room temperature), very hard and brittle; and working hot glass, shaping it while molten, using blowing and/or kiln forming techniques at temperatures ranging from 1700 to over 3000 degrees.

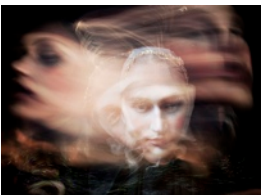
Rich in visual vernacular, "COLD+HOT 2010" introduces the work of new artists to Micaëla Gallery, Kathleen Elliot, Michael Janis, Tim Tate, and Mark Leibowitz.



Kathleen Elliot, a multi-awarded artist (Juror's Award, Bay Area Glass Institute 2009), works with botanical sculpture - natural and imaginary - which have earned recognition for her work on a national level throughout the U.S.

Michael Janis received the 2010 Saxe Fellowship at the Bay Area Glass Institute's recent "Great Glass Auction," in San Jose, California. "COLD+HOT 2010" features selections from Janis' Tarot Series.

San Francisco Bay area native Mark Leibowitz graduated from Stanford University and lived in Spain and Brazil prior to moving to Los Angeles. His work blends lifestyle, fashion, travel and portraiture. Recent projects include backstage coverage of the fashion shows in New York, Milan and Paris and philanthropy.



Ken Trapp, former Curator-in-Charge of the Smithsonian American Art Museum, states that Tim Tate "takes on the clichés of our culture, and lays down a challenge for himself." Blending traditional sculpture with new media technology gives Tate the framework to fit his artistic narrative.



You are cordially invited to join us for a welcoming reception for the artists on Thursday, 1 July 2010, from 5 to 7.30 pm.

For inquiries or a preview of these works, please contact [info@micaela.com](mailto:info@micaela.com).

A print exhibition catalog, PDF exhibition catalog, photographs and high resolution images are available upon request. To order print exhibition catalog, please contact the gallery at [info@micaela.com](mailto:info@micaela.com)

All images are courtesy of the artists and Micaëla Gallery, protected by all copyright/trademark laws everywhere. ©1997-2010 micaëla and micaëla gallery, its name, logo and all website content are copyright/trademarks of micaëla gallery llc.

Image credits:

Above, left: Kathleen Elliot. *Homage to Castaneda*, 2007. Flame-worked and sandblasted glass, painted steel. 40 x 25 x 7 in.

Right: Michael Janis. *Death*, 2009. Kiln-cast glass and steel. 19 x 37 x 2 in.

Left: Mark Leibowitz. *Her Spirit*, 2009. Archival pigmented ink on Epson exhibition fiber. Editions of 10. Image 24 x 30 in. (framed 30 x 36 in.)

Right: Tim Tate. *Dreaming of Ophelia*, 2009. Original video, 5:00, looped. Edition of 5.

All images are courtesy of the artists and Micaëla Gallery, and protected by all copyright/trademark laws everywhere.

©1997-2010 micaëla and micaëla gallery are copyright/trademarks of micaëla gallery llc and protected by all copyright and trademark laws everywhere

A print exhibition catalog, PDF exhibition catalog, photographs and high resolution images are available upon request. To order print exhibition catalog, please contact the gallery at [info@micaela.com](mailto:info@micaela.com)

**About Us:** Micaëla Gallery is located at 49 Geary Street, No. 234, San Francisco, CA. Gallery hours are Tuesday through Saturday, 11am to 6pm, and by appointment. The closest BART/MUNI stop is at Montgomery Station. Public parking is available at the Sutter/Stockton Garage and the Union Square Garage.